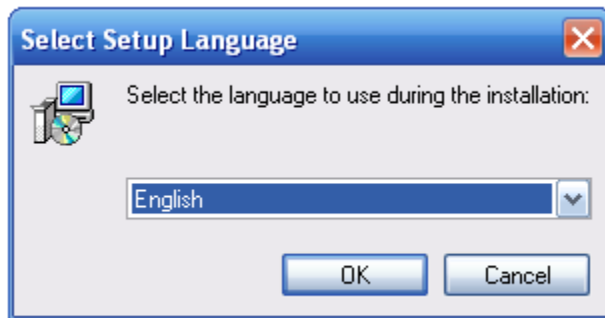


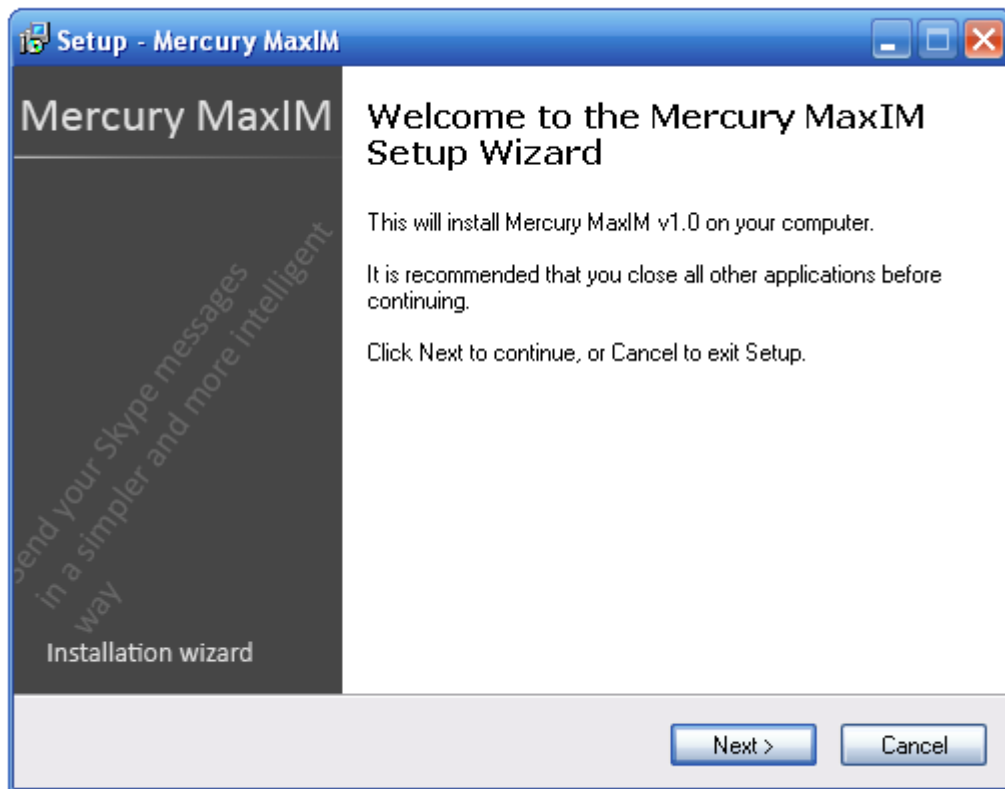
# *Mercury MaxIM Manual*

## *Install*

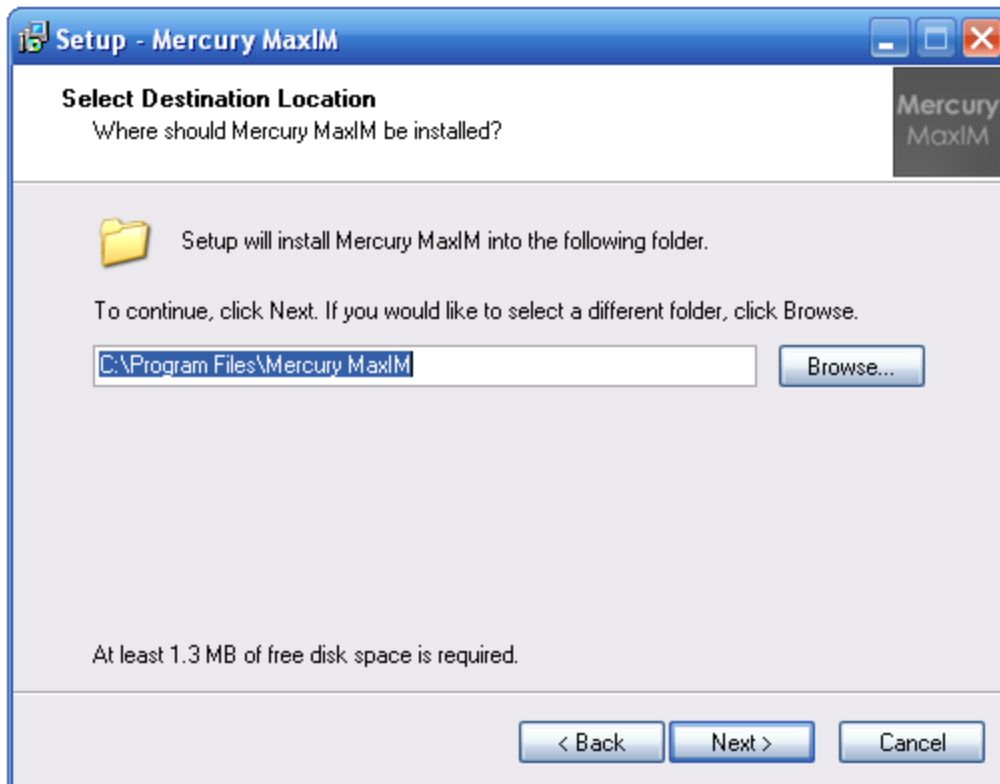
Save the “Mercury MaxIM Setup.exe” file to your computer in a location where you will be able to find it. Click open to run and install Mercury MaxIM on your computer. Then Just follow the instructions.



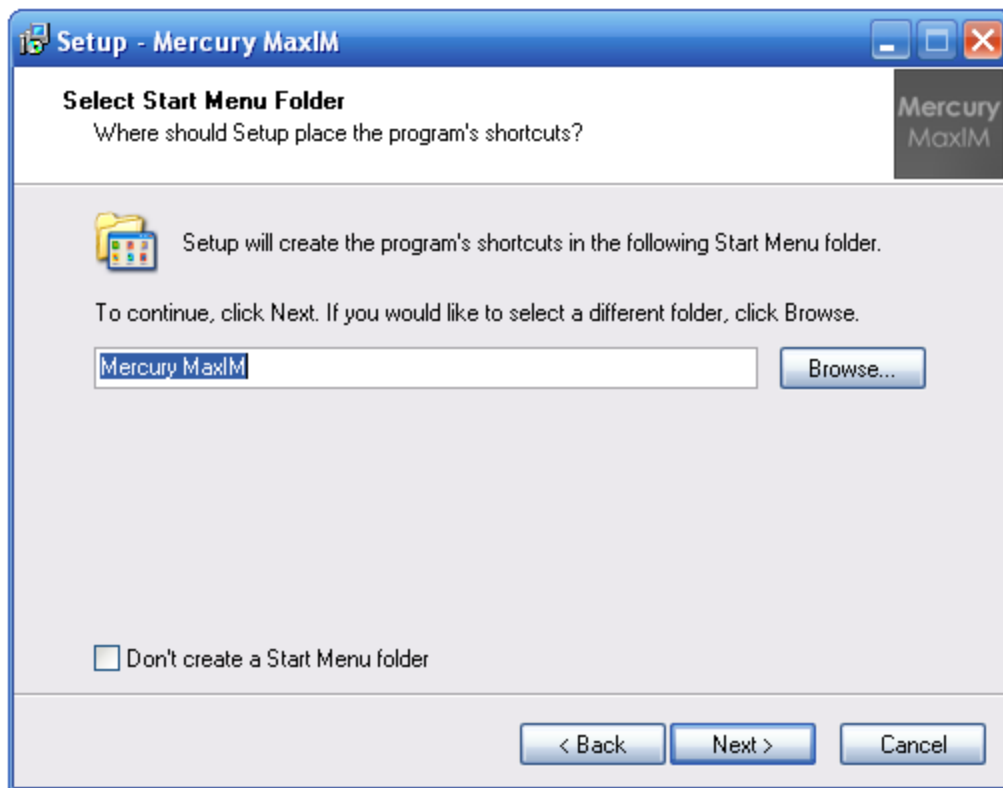
Click OK



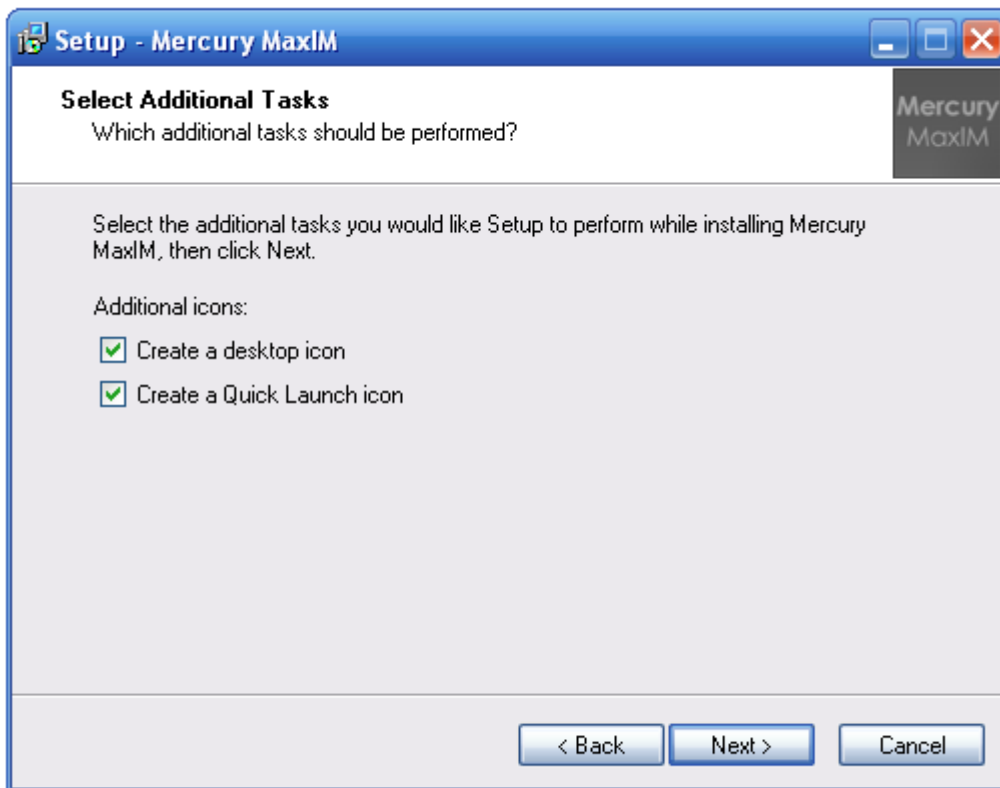
Click Next >



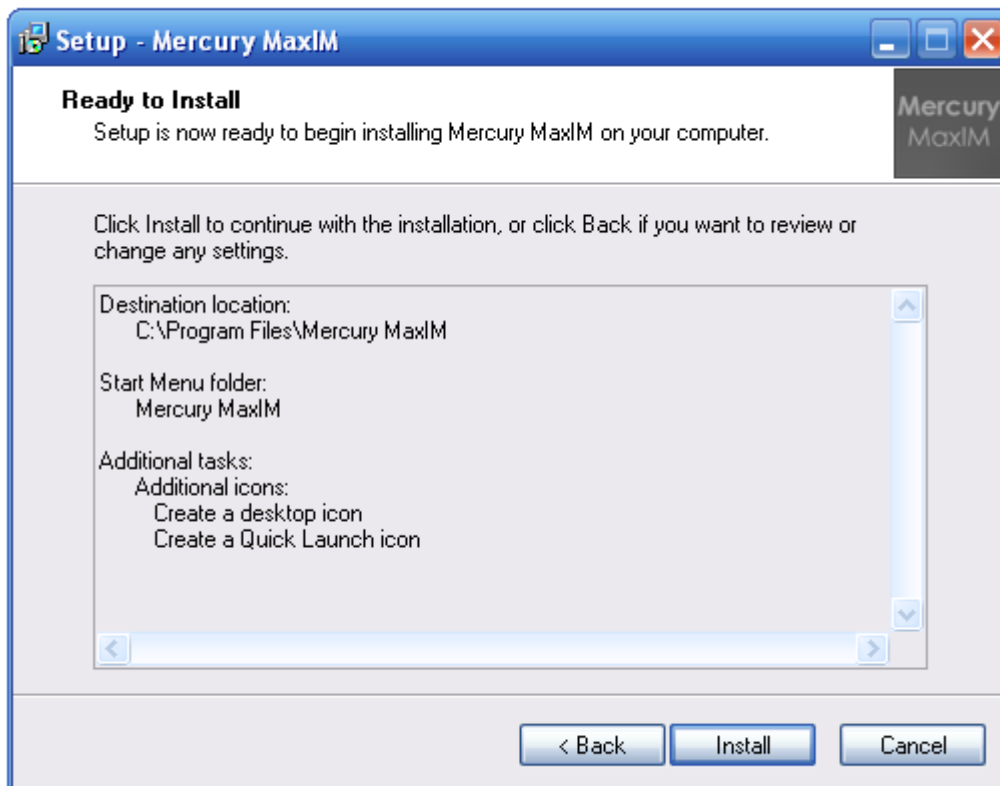
Click Next >



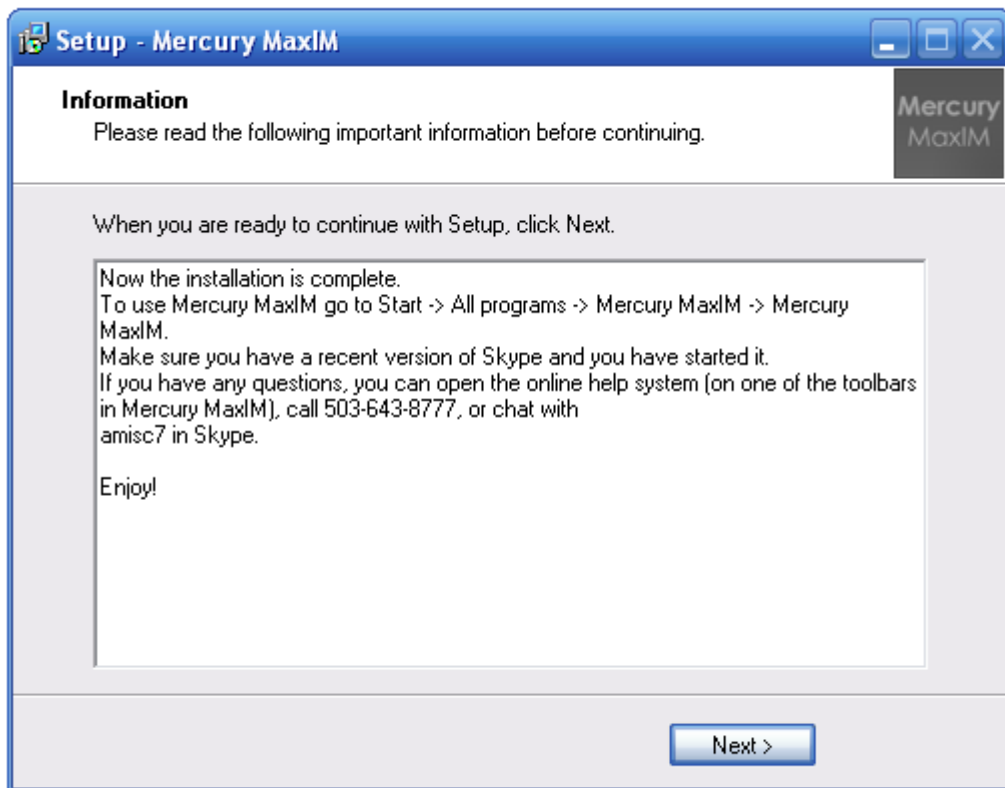
Click Next >



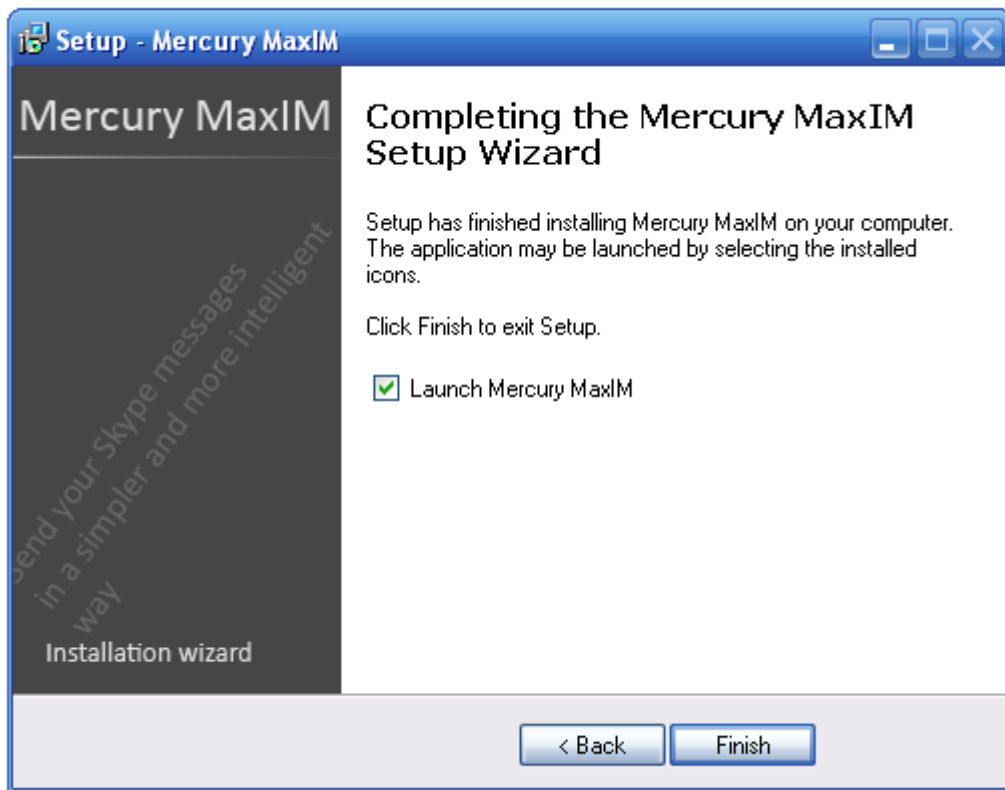
Click Next >



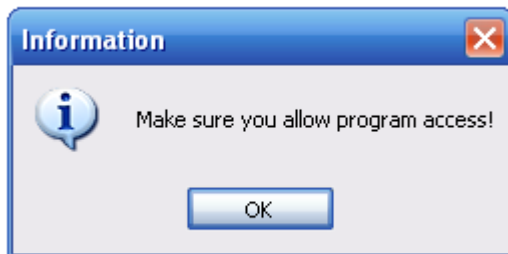
Click Install



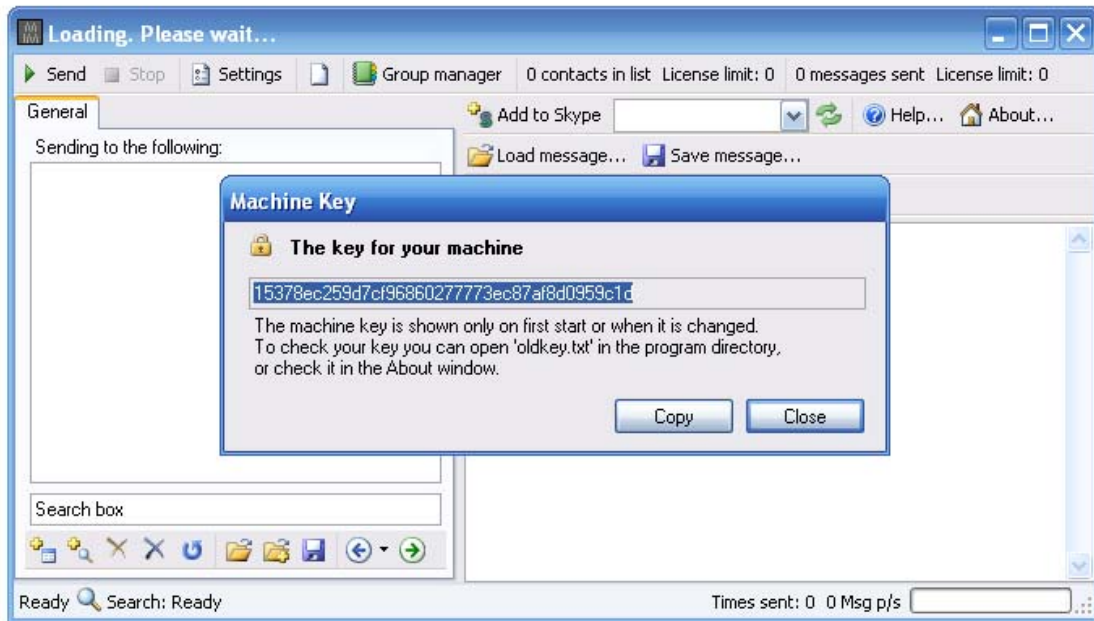
Click Next >



Click Finish



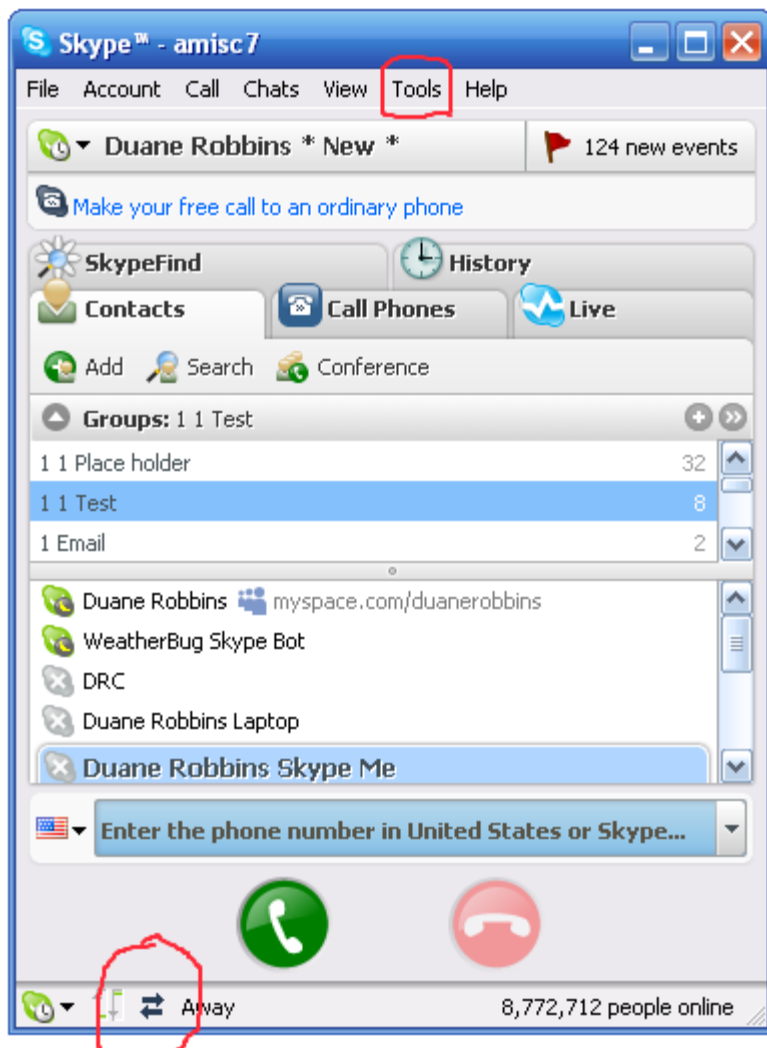
Click OK



(You can Click Copy and then Paste your code where you can find it later to upgrade your license)

Click Close

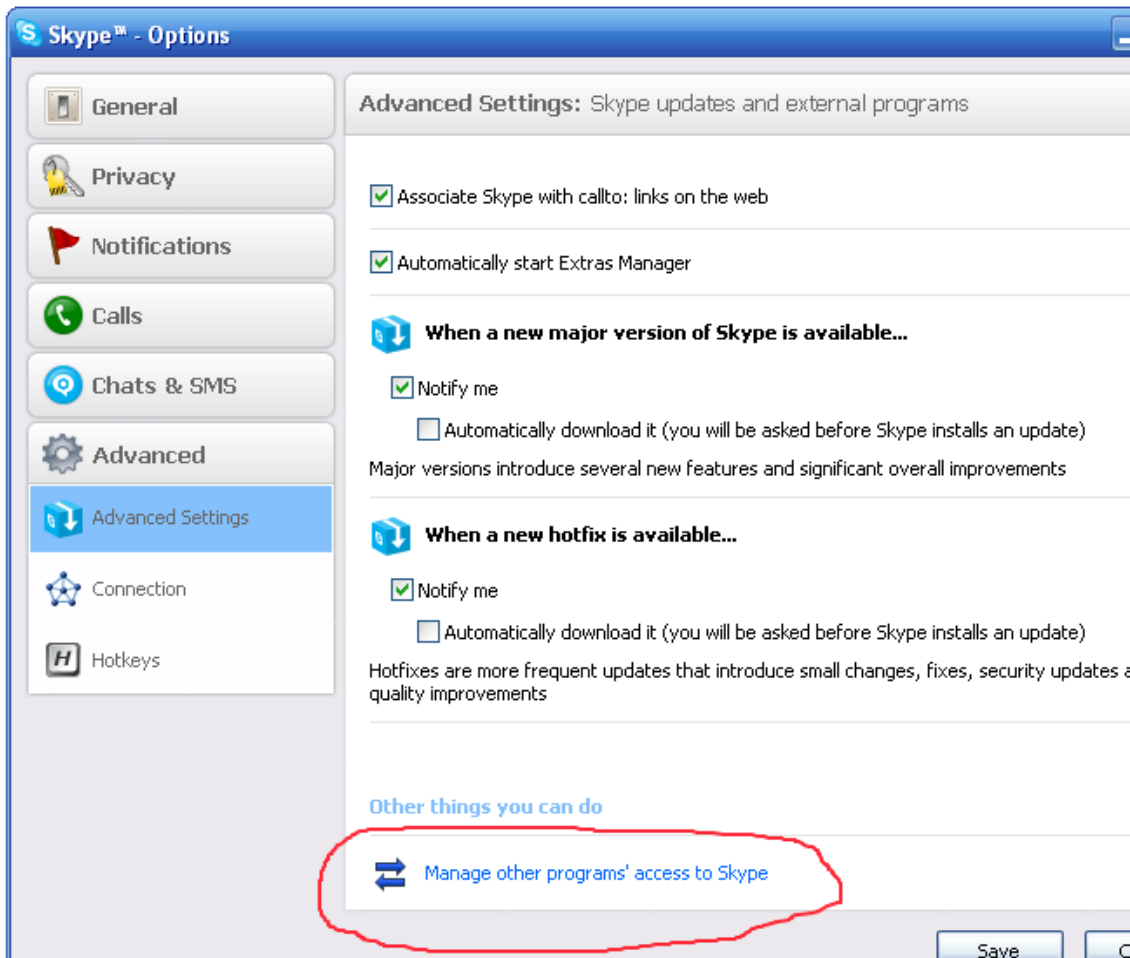
Open Skype to the main contact window

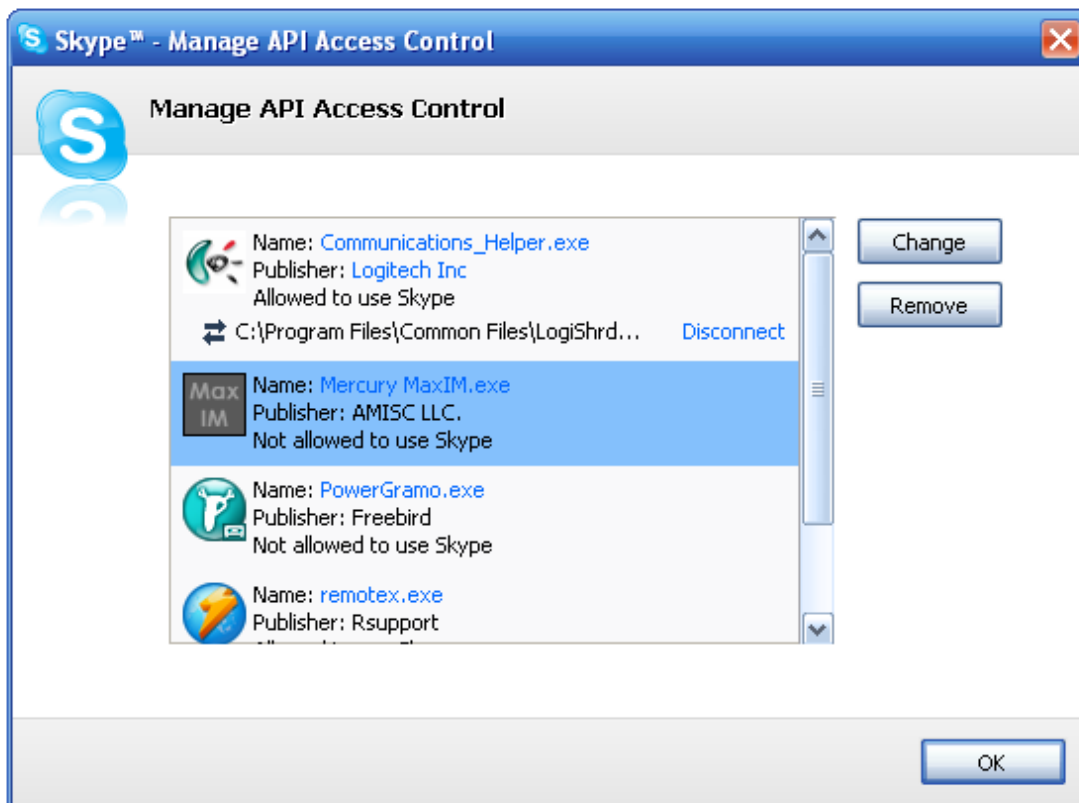


Click on the two arrows circled above

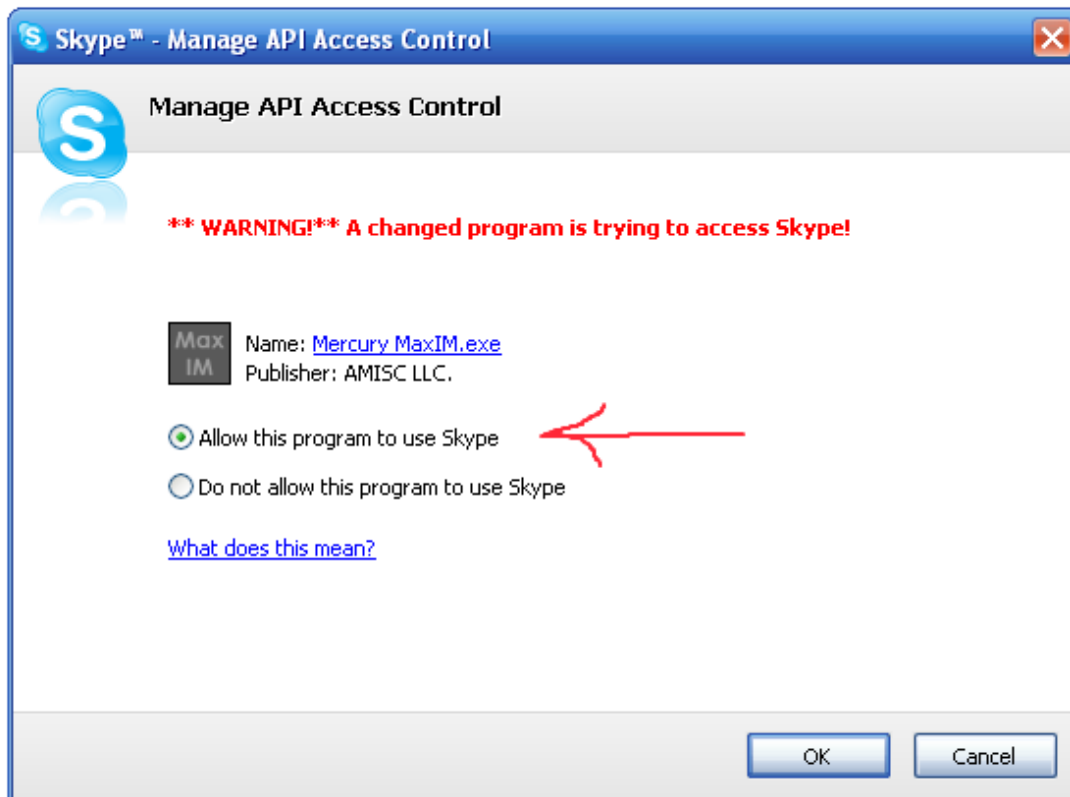
**(OR)**

Click tools, options, advanced,  
Manage other programs' access to Skype

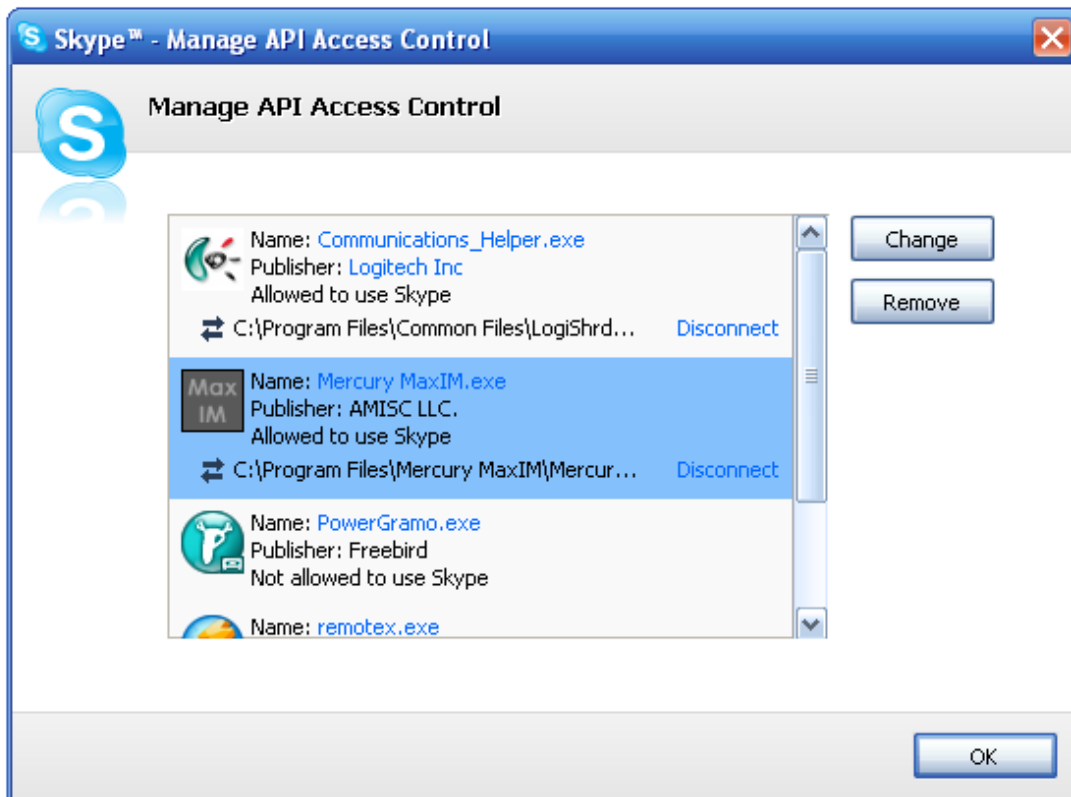




Click on Max IM to highlight it  
Click Change

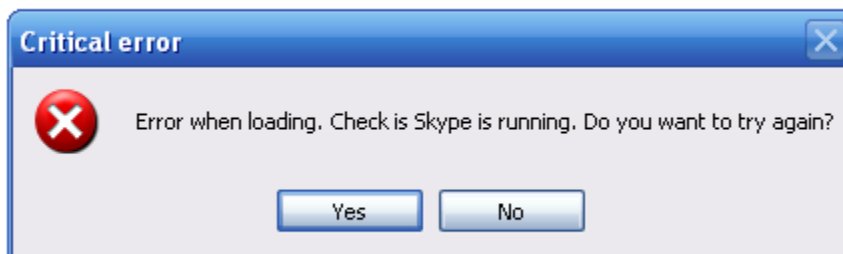


Click the circle to "Allow this program to use Skype"  
Click OK



Click OK

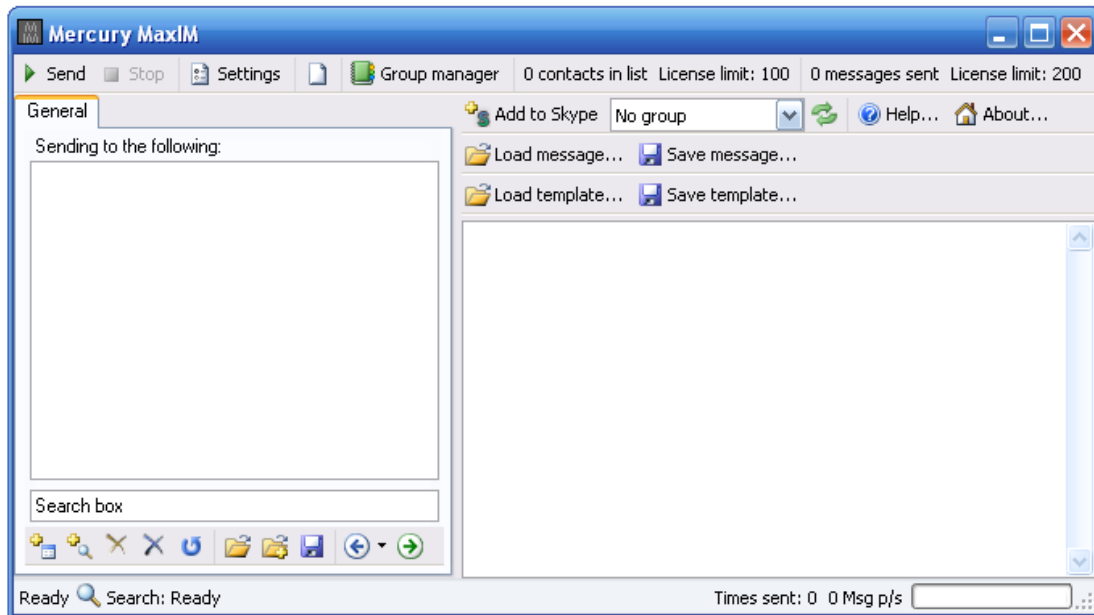
IF you get the following error



Make sure you have followed all the steps above and allowed MaxIM to access Skype.

Press Yes

You will get the following screen indicating that the installation is successful and you are ready to use Mercury MaxIM (MMIM).



Please refer to the MMIM Fast Start Guide before using the program.

Copyright all rights reserved AMISC LLC 2008